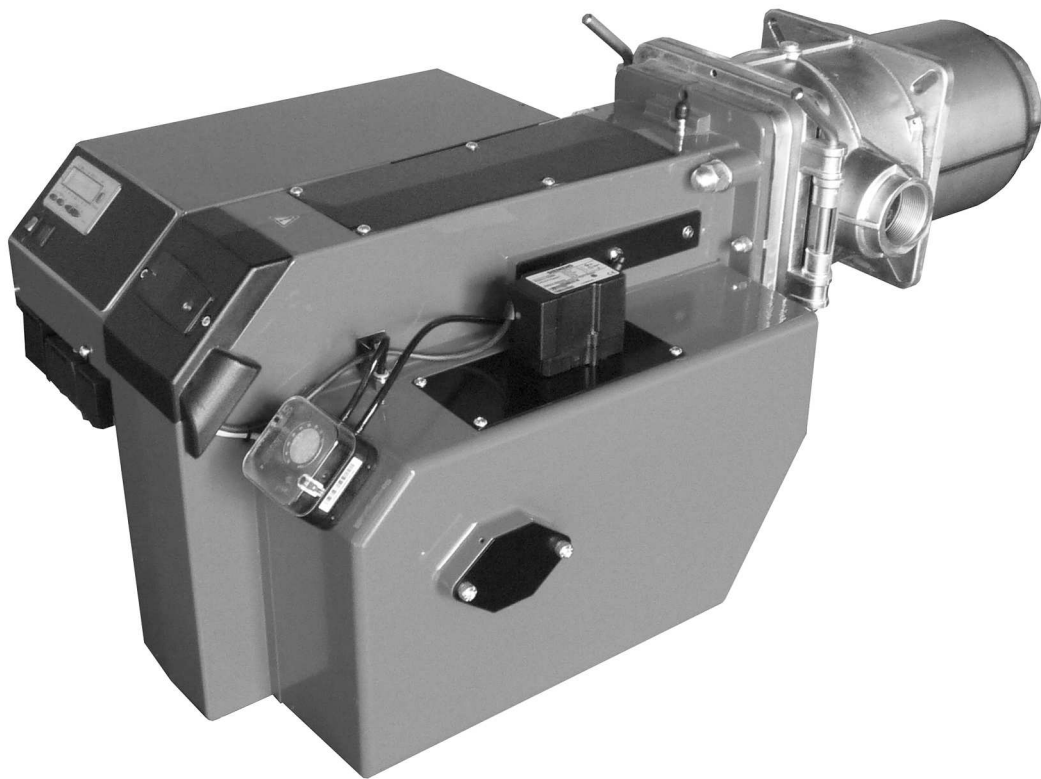


Technical Information • Data Sheet

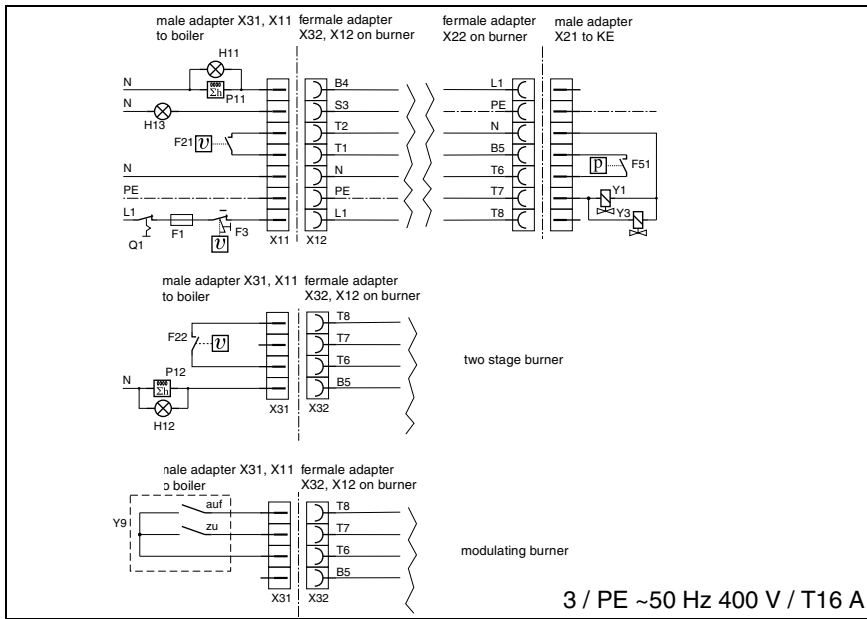
MG2-ZM-L-NB-UV

Edition July 2022
Technical changes in the sense of
product improvement reserved!

Duo - Gas



Electrical connection



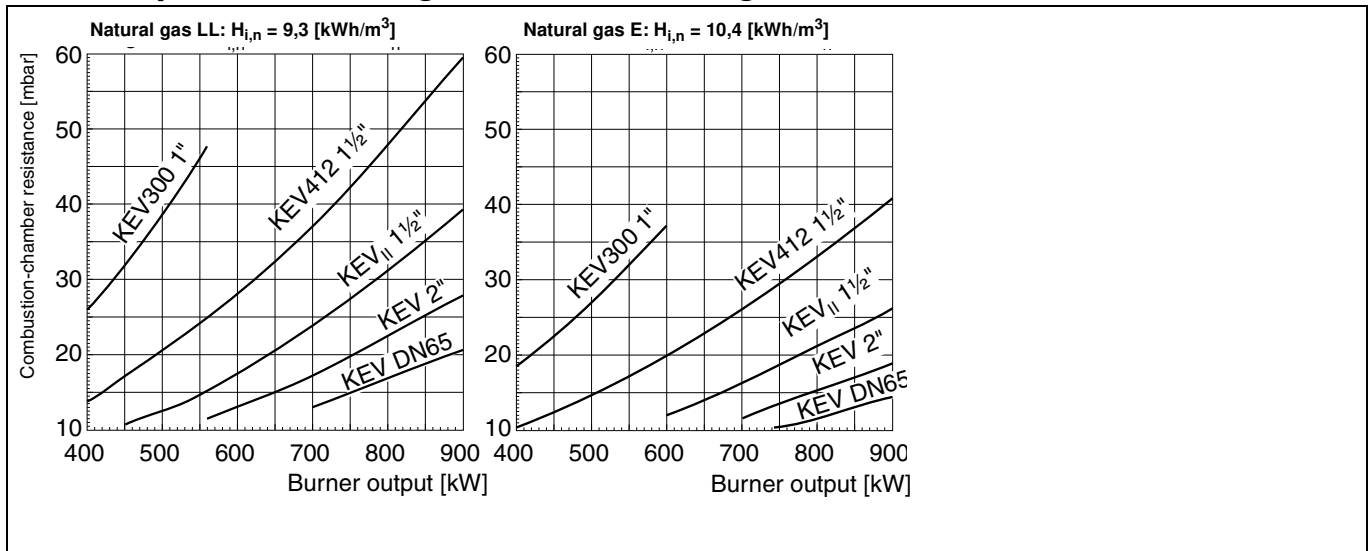
Legend:

- F1 Ext. fuse boiler control
- F21,F22 Ext. temp. controller 1st stage / 2nd stage
- F3 Ext. safety temperature limiter
- F51 Gas-pressure monitor
- Q1 Main heating switch
- H11,H12 Ext. pilot lamp
- H13 Ext. fault message lamp
- L1 Phase
- P11,P12 Time meter 1st stage / 2nd stage
- Y1,Y2 Solenoid valve
- Y3 Safety solenoid valve
- Y9 Ext. regulator

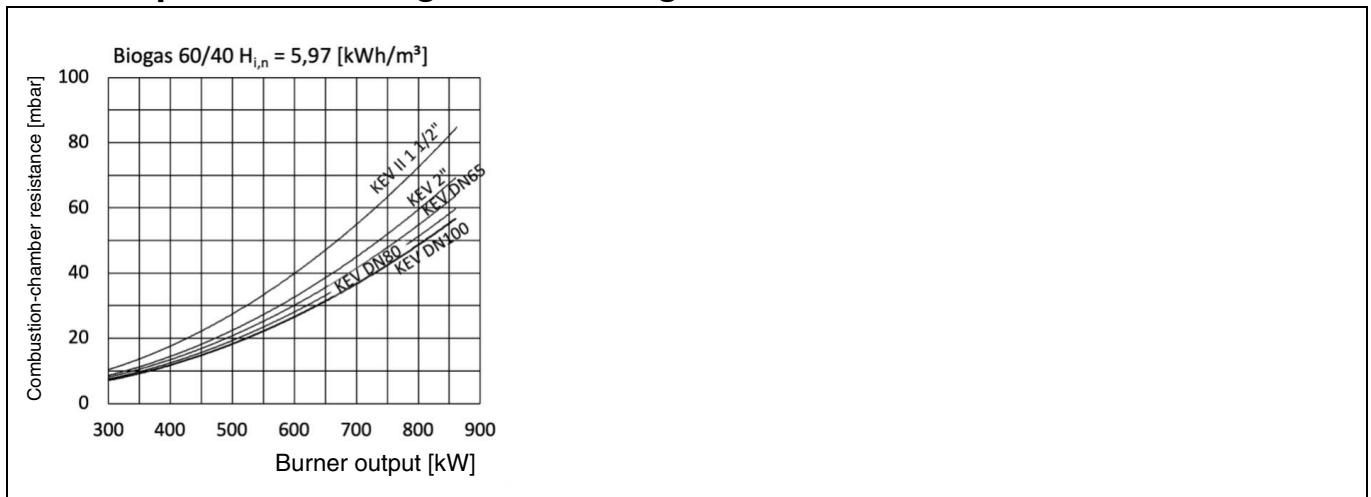
Technical specifications

	Burner type
Technical specifications	MG2-ZM-L-NB-UV
Burner output in kW	250 - 900
Gas type	Natural gas LL + E= „ N“, Biogas 60/40
Mode of operation	two stage / modulating
Mode of operation voltage	3/N/PE ~50 Hz 400 V 7 T 16 A
Max. power consumption	3,3 A
Electric motor power (at 2800 rpm) in kW	1,1
Flame failure controller	UV Sonde QRA 2
Control box	LMV26
Weight in kg	56
Noise emission in dB (A)	≤ 77
Gas burner class	1
NOx Limit value	≤ 120 mg/kWh

Gas ramp selection diagrams for Natural gas



Gas ramp selection diagrams for Biogas



Important information about biogas!



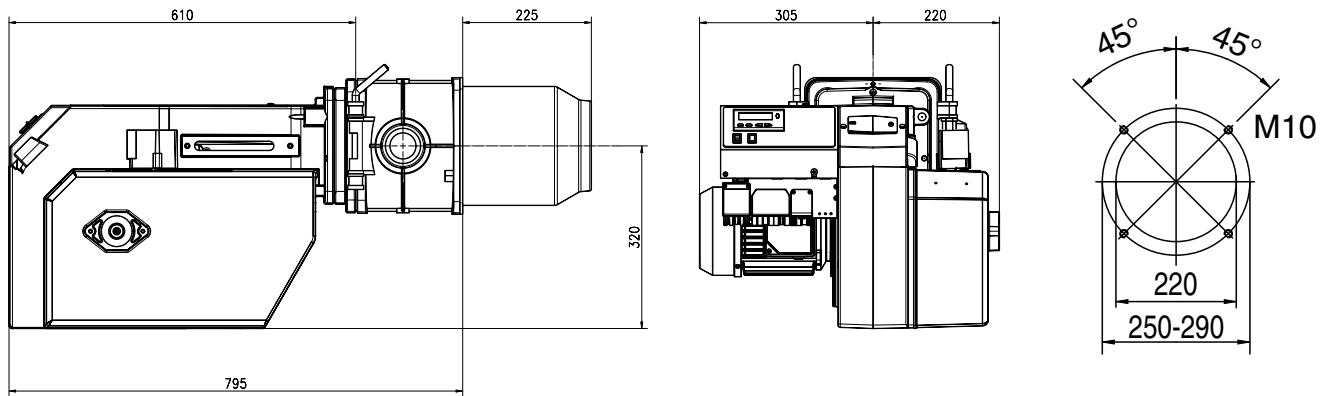
The gas composition must not contain more than 0.01% H₂S (hydrogen sulfide).

The gas composition should be more than 50% combustible gases (preferably CH₄) exist.

The selection chart is based on 60% methane (CH₄) to 40% carbon dioxide (CO₂).

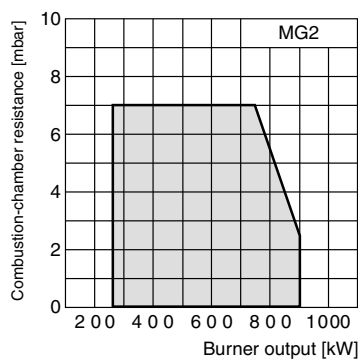
Overall dimensions / Boiler connection measures

(all dimensions are given in mm)



X = Burner tube extension 100 mm and 200 mm

Working range



Working ranges according to DIN EN 676. The working ranges refer to 15°C and 1013 bar.

All information in this technical documentation as well as the drawings, photos and technical descriptions placed at your disposal remain our property and may not be duplicated without our written permission given in advance.
Right reserved to effect modifications.

GIERSCH

Enertech GmbH • Brenner und Heizsysteme
Postfach 3063 • D-58662 Hemer • Telefon 02372/965-0 • Telefax 02372/61240
E-Mail: info@giersch.de • Internet: <http://www.giersch.de>

