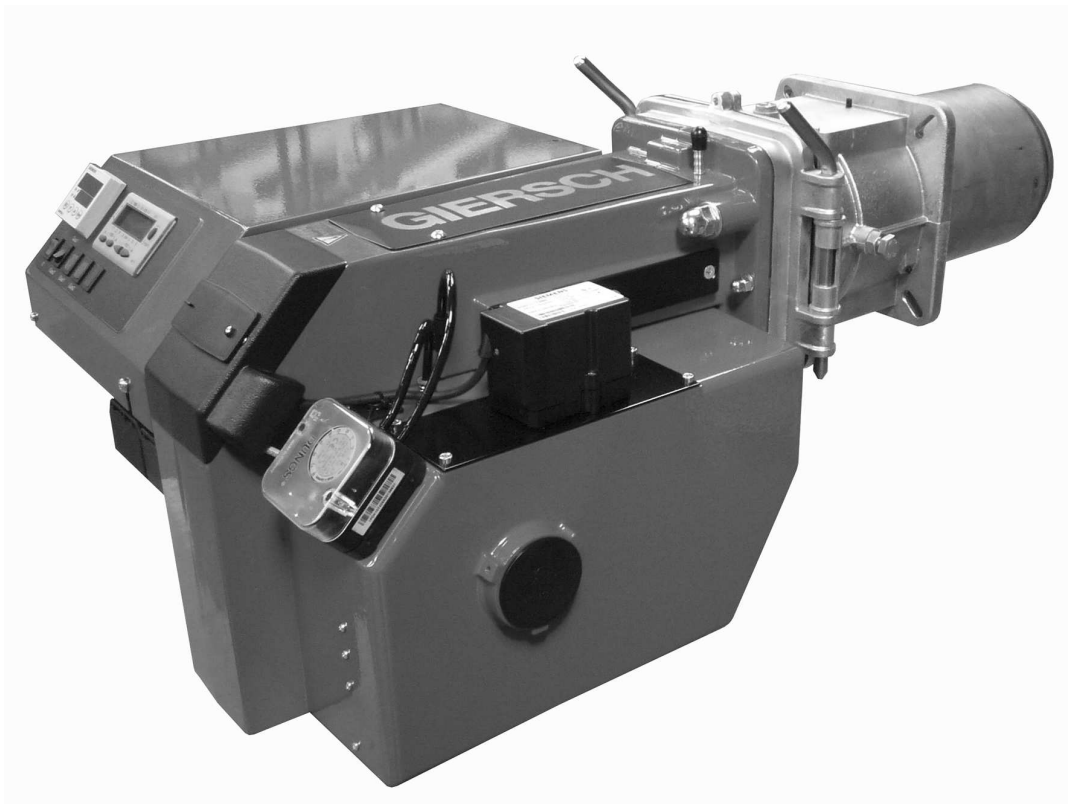


## Technical Information • Data Sheet

# MG10-ZM-L-NB

Edition July 2022  
Technical changes in the sense of  
product improvement reserved!

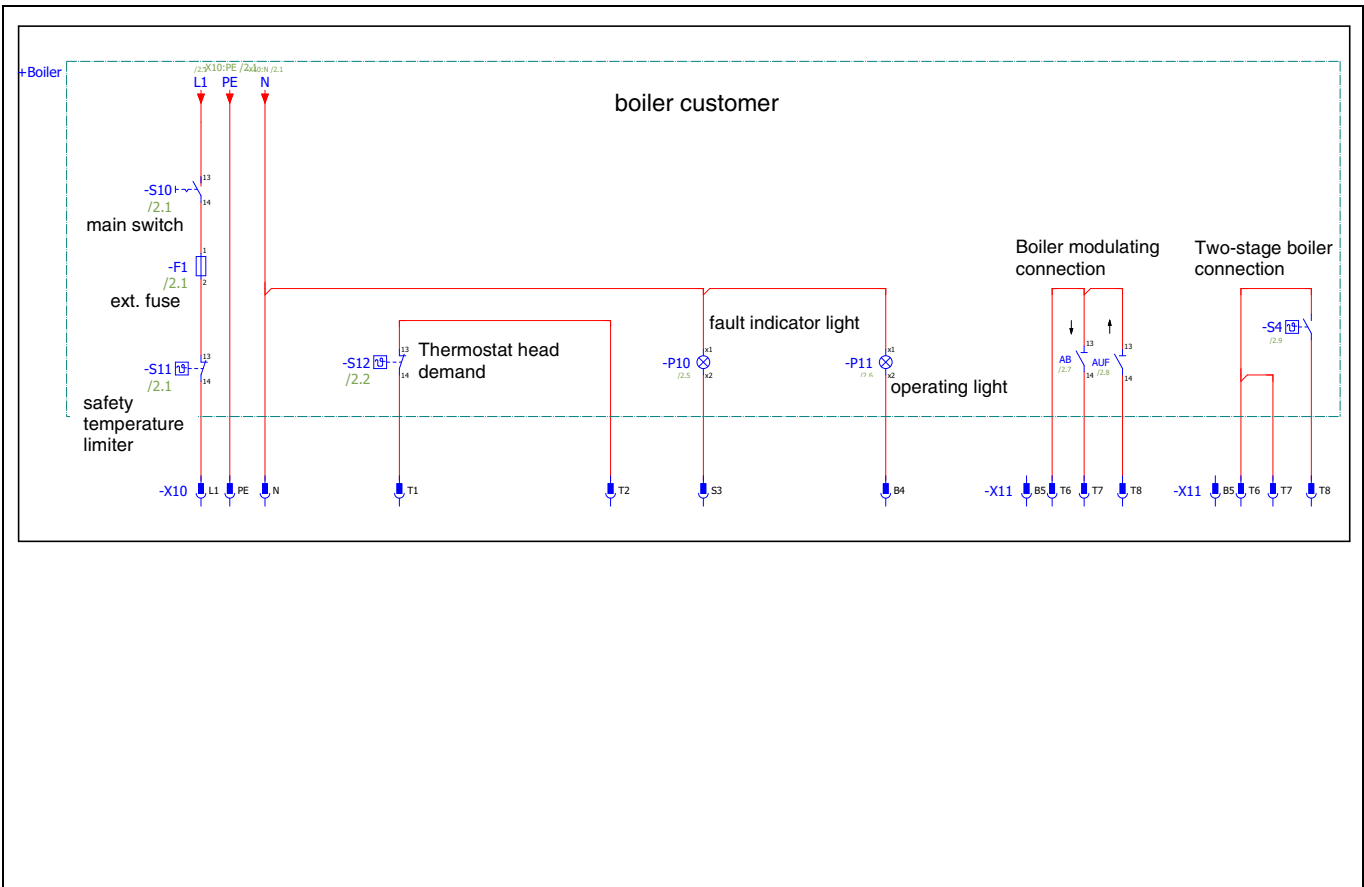
**Duo - Gas**



# Electrical connection

If the plug part is already wired:

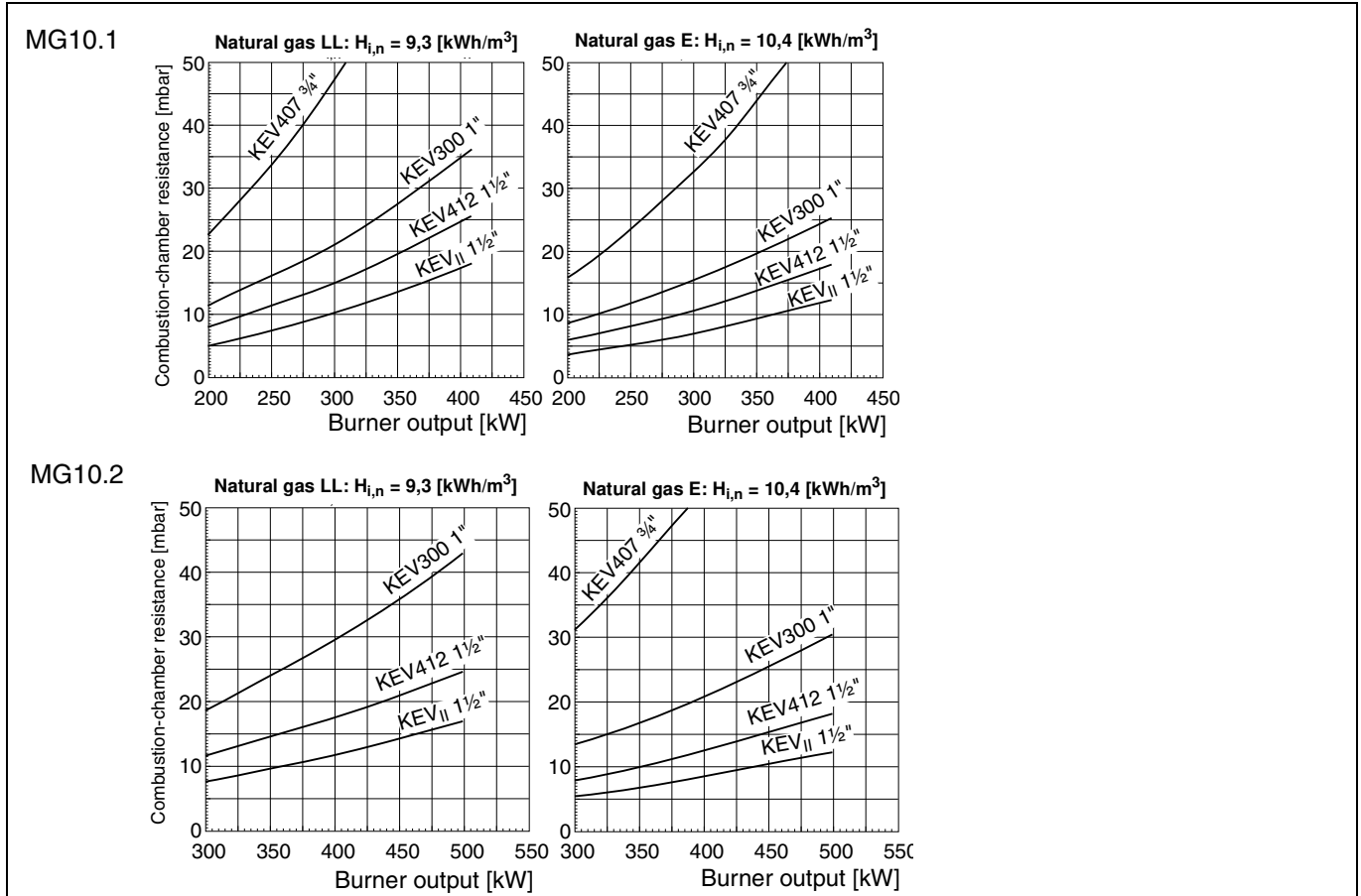
Check the connections according to the connection diagram!



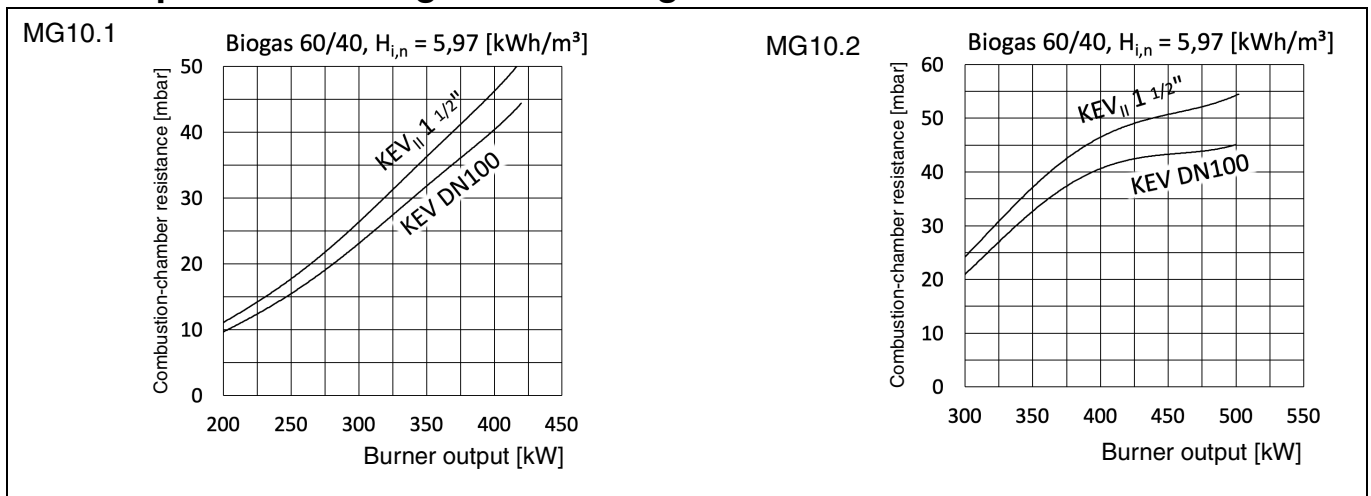
## Technical specifications

Technical specifications	Burner type	
	MG 10.1	MG 10.2
Burner output in kW	180 - 420	220 - 500
Gas type	Natural gas LL + E, Biogas	
Mode of operation	two stage / modulating	
Mode of operation voltage	1 / N / PE / ~ 50 Hz / 230 V	
Max. power consumption at start / during operation	4 A max. / 2 A eff.	6,5 A max. / 3,5 A eff.
Electric motor power (at 2800 rpm) in kW	0,370	0,750
Flame failure controller	Ionisation	
Control box	LMV27	
Air pressure switch	LGW 50	
Weight in kg	45	46
Noise emission in dB (A)	≤ 75	
Gas burner class	1	
NOx Limit value	< 170 mg/kWh	

## Gas ramp selection diagrams for Natural gas



## Gas ramp selection diagrams for Biogas



### Important information about biogas!

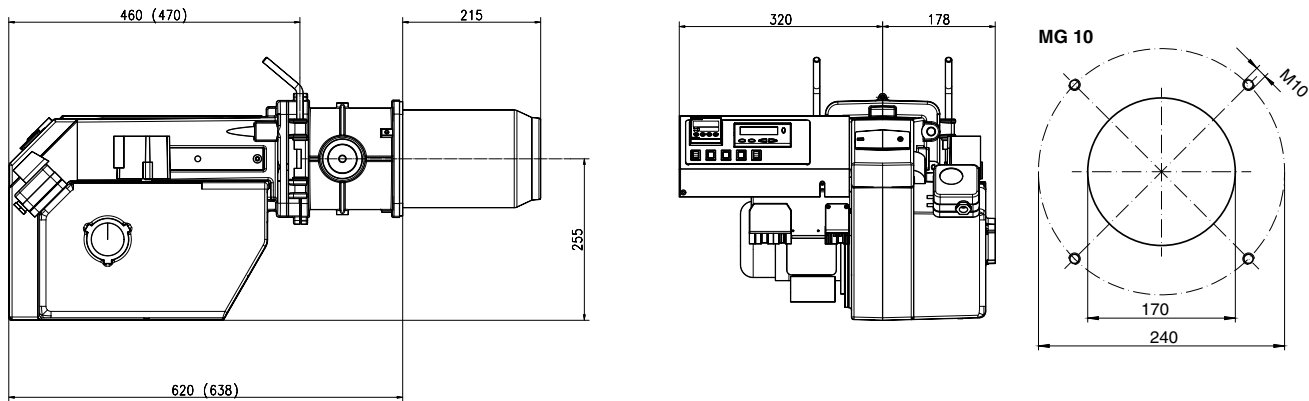
The gas composition must not contain more than 0.01% H<sub>2</sub>S (hydrogen sulfide).

The gas composition should be more than 50% combustible gases (preferably CH<sub>4</sub>) exist.

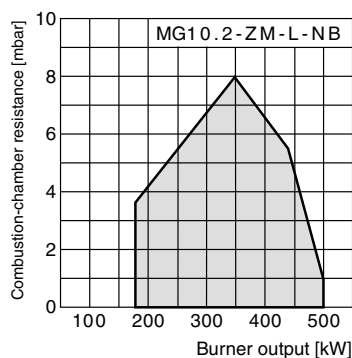
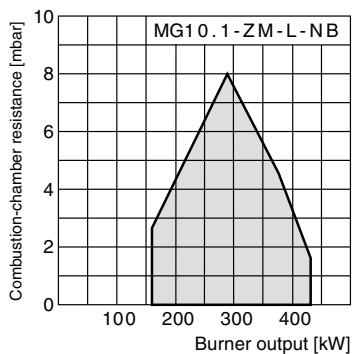
The selection chart is based on 60% methane (CH<sub>4</sub>) to 40% carbon dioxide (CO<sub>2</sub>).

## Overall dimensions / Boiler connection measures

all dimensions are given in mm (dimensions in brackets MG10.2)



## Working range



DVGW tested work areas according to DIN EN 676.

All information in this technical documentation as well as the drawings, photos and technical descriptions placed at your disposal remain our property and may not be duplicated without our written permission given in advance.  
Right reserved to effect modifications.

# GIERSCH

Enertech GmbH • Brenner und Heizsysteme  
Postfach 3063 • D-58662 Hemer • Telefon 02372/965-0 • Telefax 02372/61240  
E-Mail: [info@giersch.de](mailto:info@giersch.de) • Internet: <http://www.giersch.de>

